

DIY2412 Sara slipover dress

Seam allowance is included on all patterns:

Neckline 0,7 cm

Hem line 3 cm

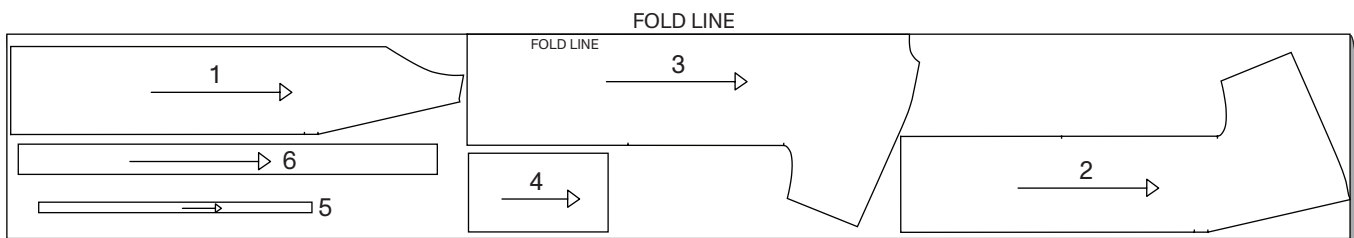
All other seams 1 cm



All rights reserved
Selfmade®

You need to cut the following parts

Part 1	Center front	x 2	
Part 2	Side front	x 2	
Part 3	Back	x 1	
Part 4	Cuff	x 2	48 cm x 26 cm
Part 5	Neck band	x 1	90 cm x 3.5 cm
Part 6	Belt	x 2	138 cm x 10 cm



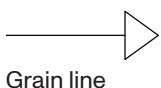
You need the following fabric and accessories

Size	XS/S	M/L	XL/XXL
Fabric:	w/135 cm 435	435	450 cm

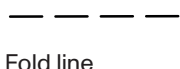
Pick your size

XS/S	-----
M/L
XL/XXL	_____

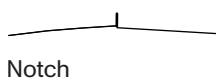
Symbols you may find on your patterns



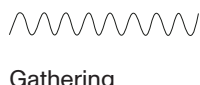
Grain line



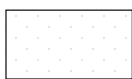
Fold line



Notch



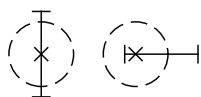
Gathering



Interlining



Cut line



Placement of button and buttonhole

10 CM

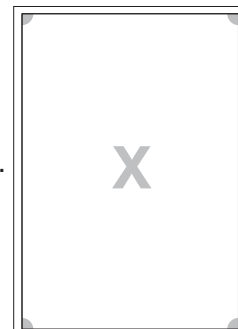
Self
made®



▲
Unsure how to print?
See this guide

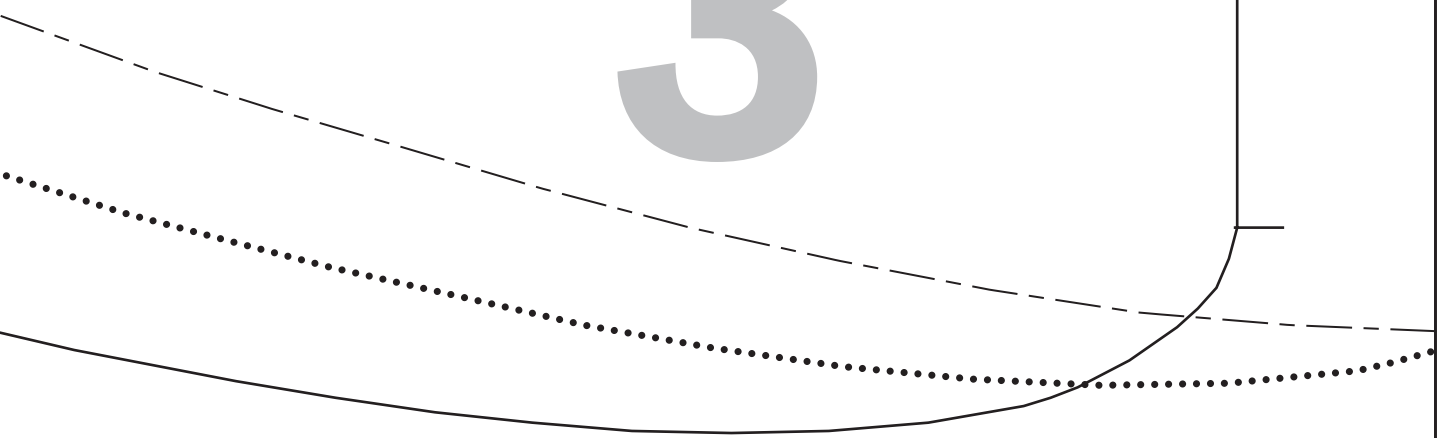
CONTROL SQUARE:
Print this page, to check the square measurements:
If the measurements do not match, please adjust your printer settings.

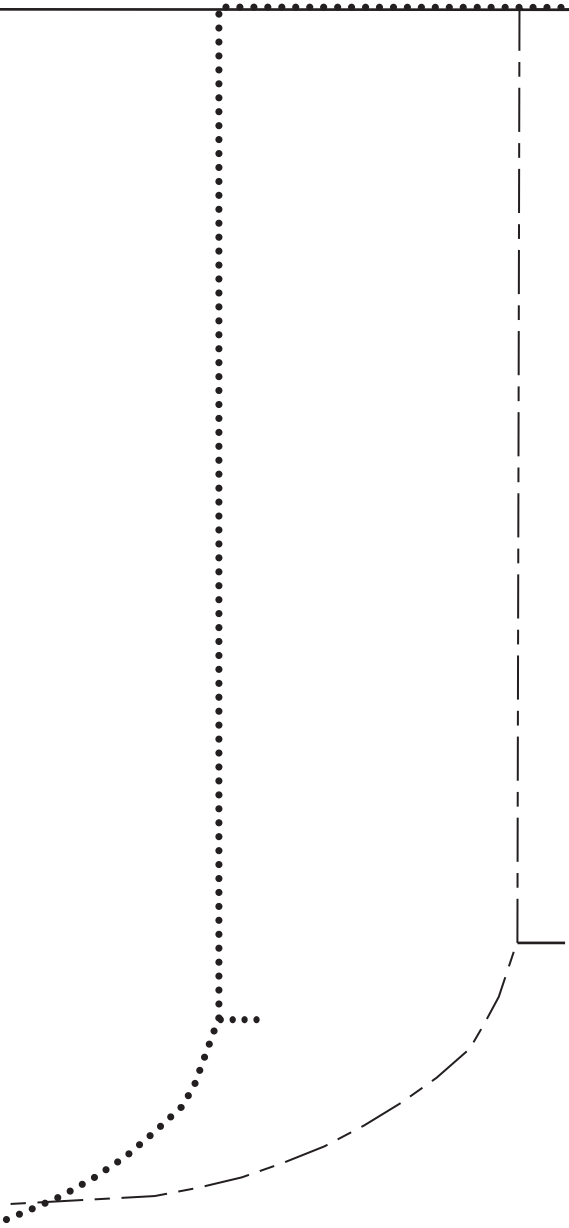
CONTROL PAGE FIT:
In print preview check page margin.
Margin have to be equal on all 4 sides of each page.



10 CM

3

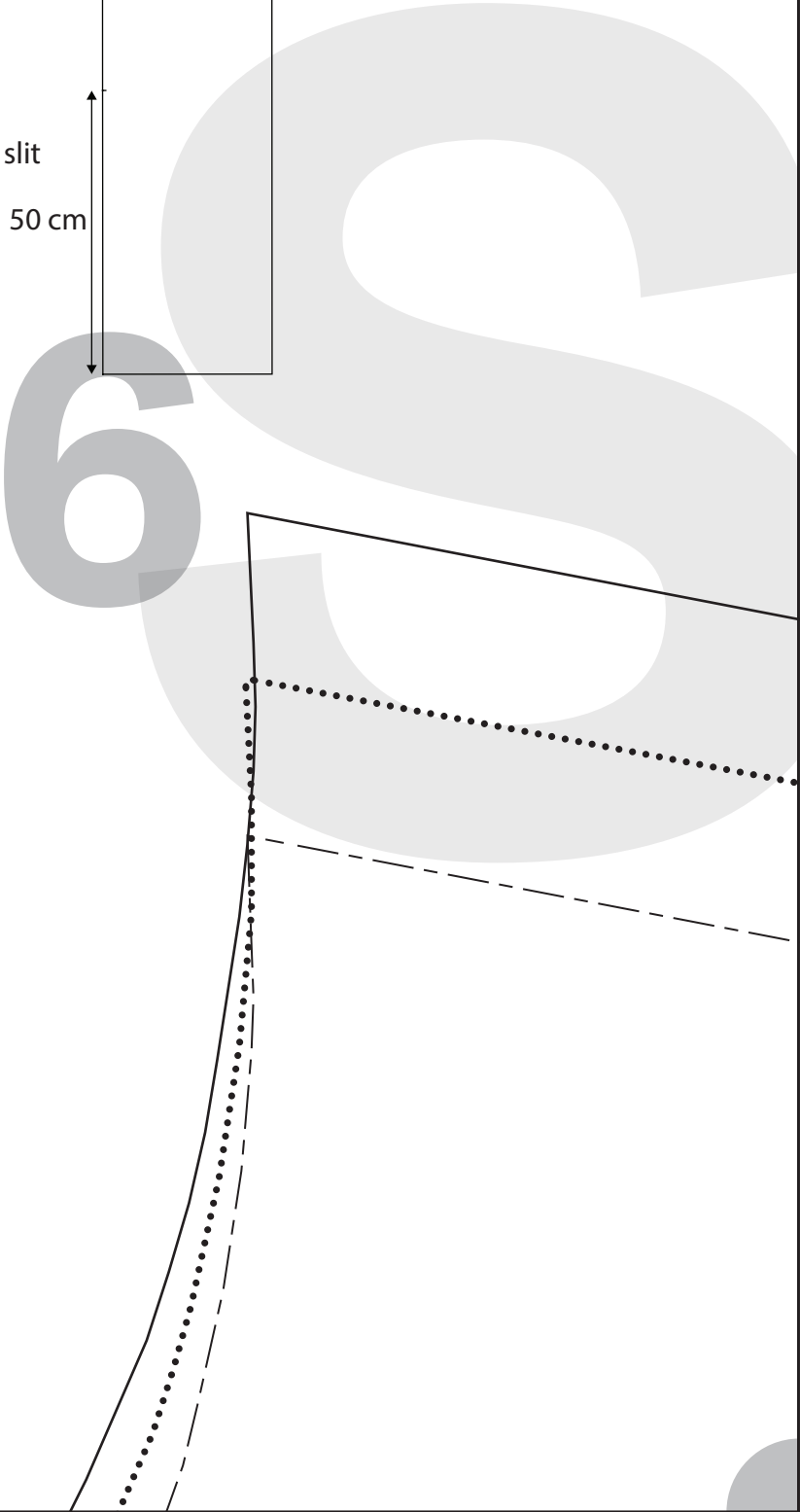
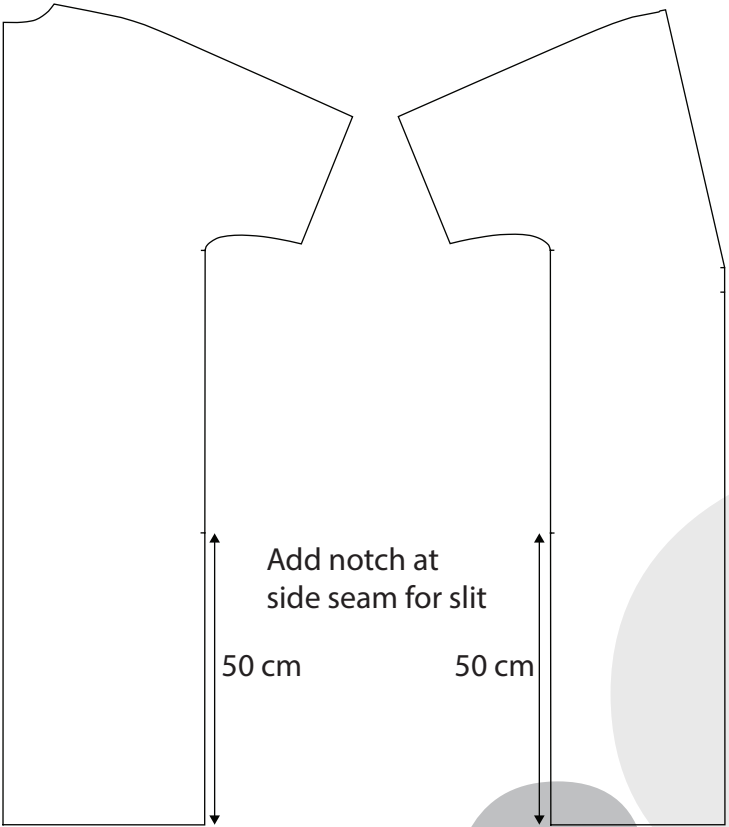


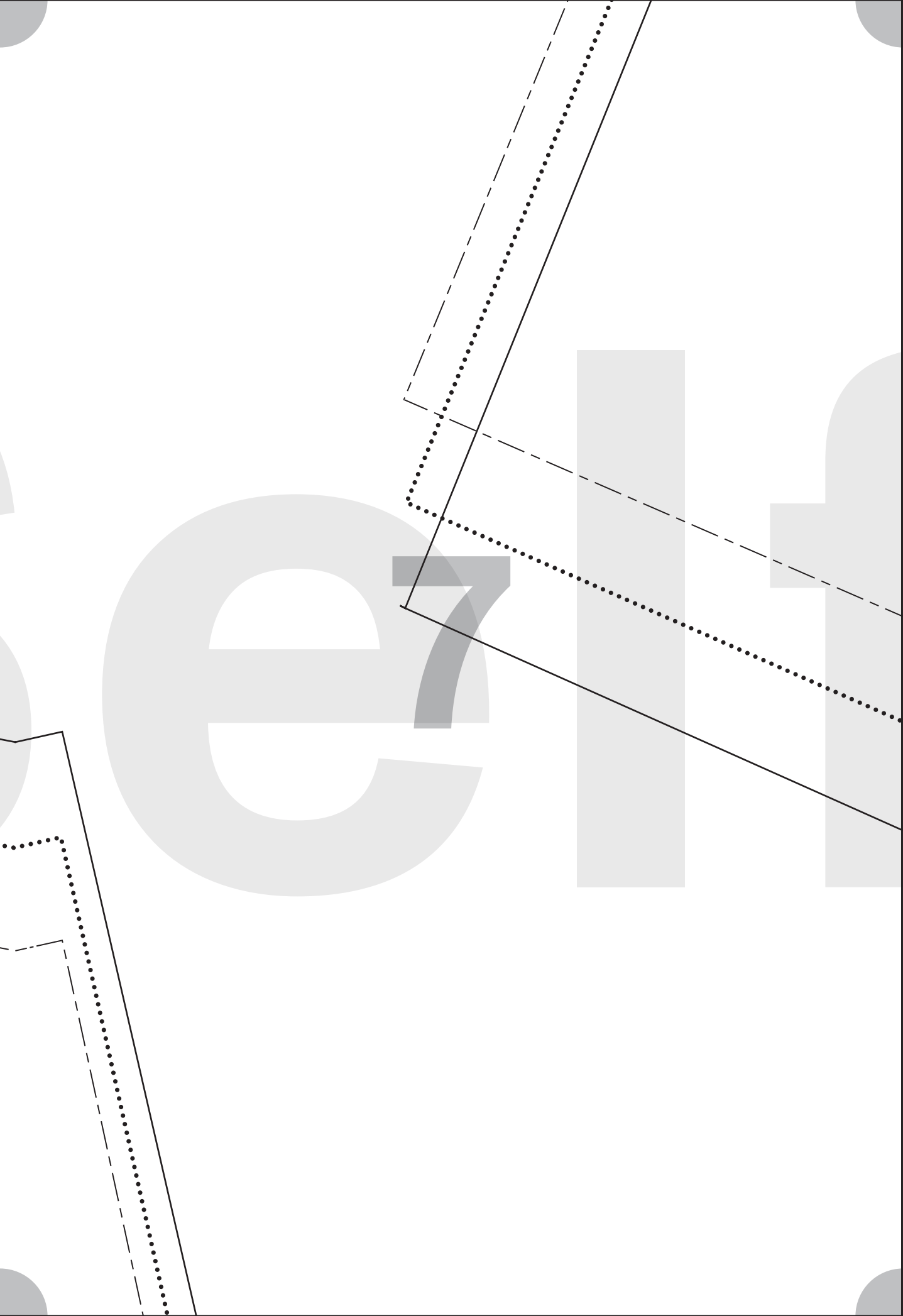


4

extend 90 cm ▲

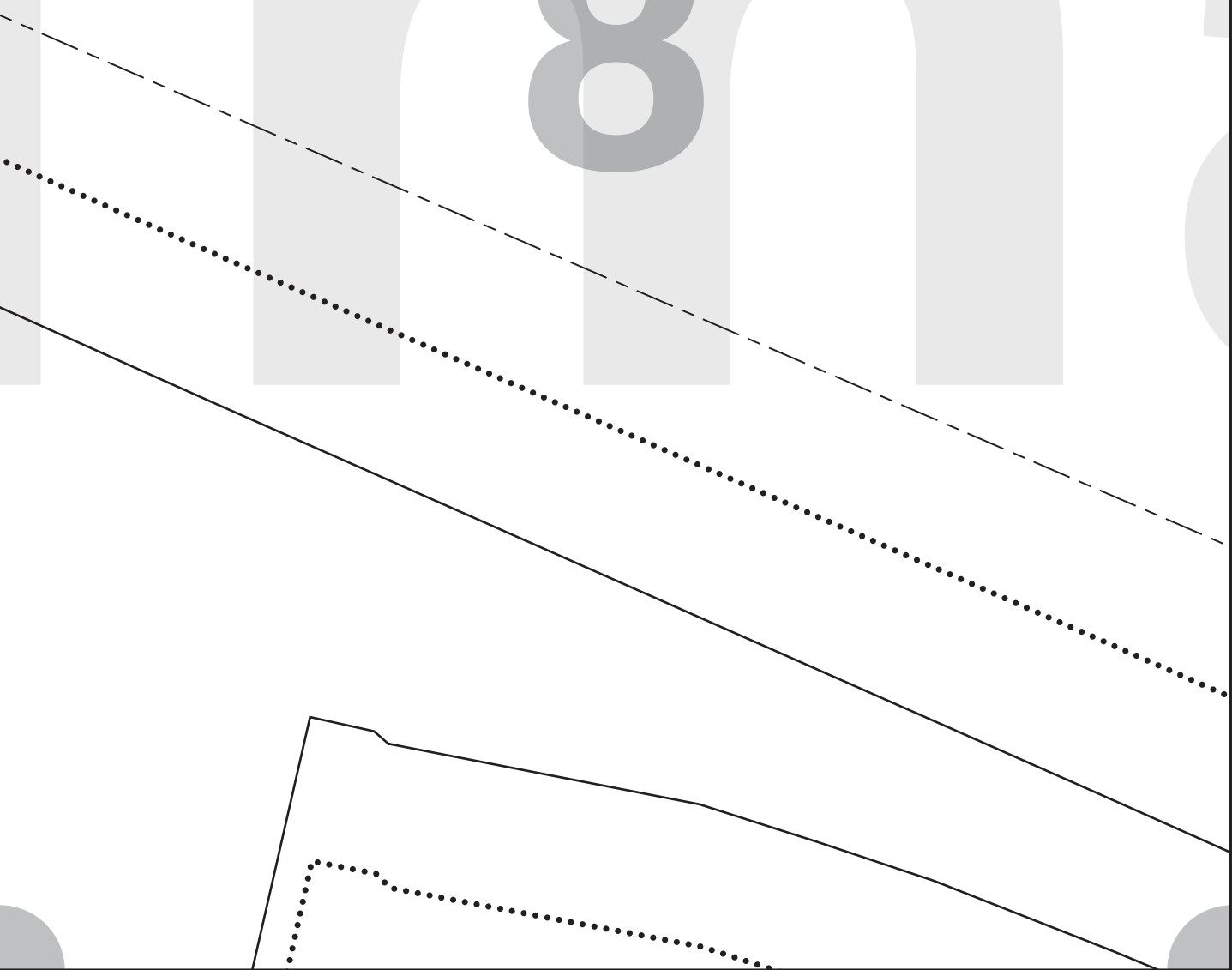
5

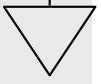




Free download from

f f m 8 m





DIY2412

PART 3

BACK

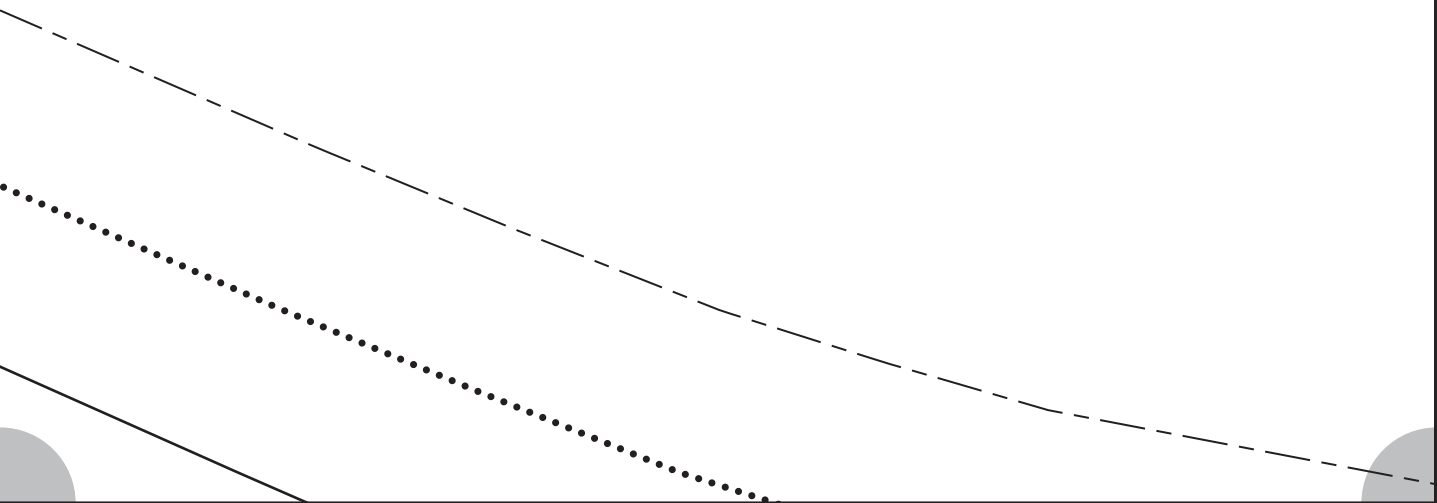


x1

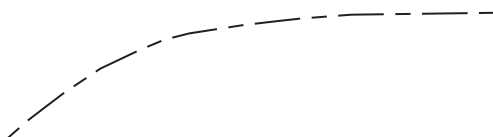
INCL. SEAM ALLOWANCE

on Selfmade.com

apron



e¹⁰®



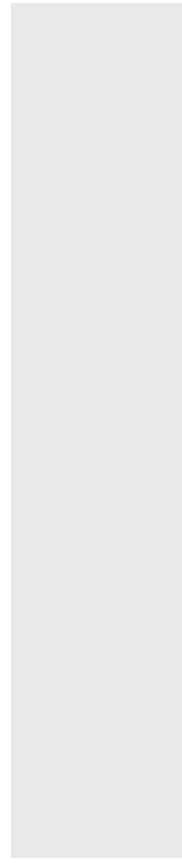


11



DIY2412
PART 1
CENTER FRONT
✂ x 2
INCL. SEAM ALLOWANCE

12

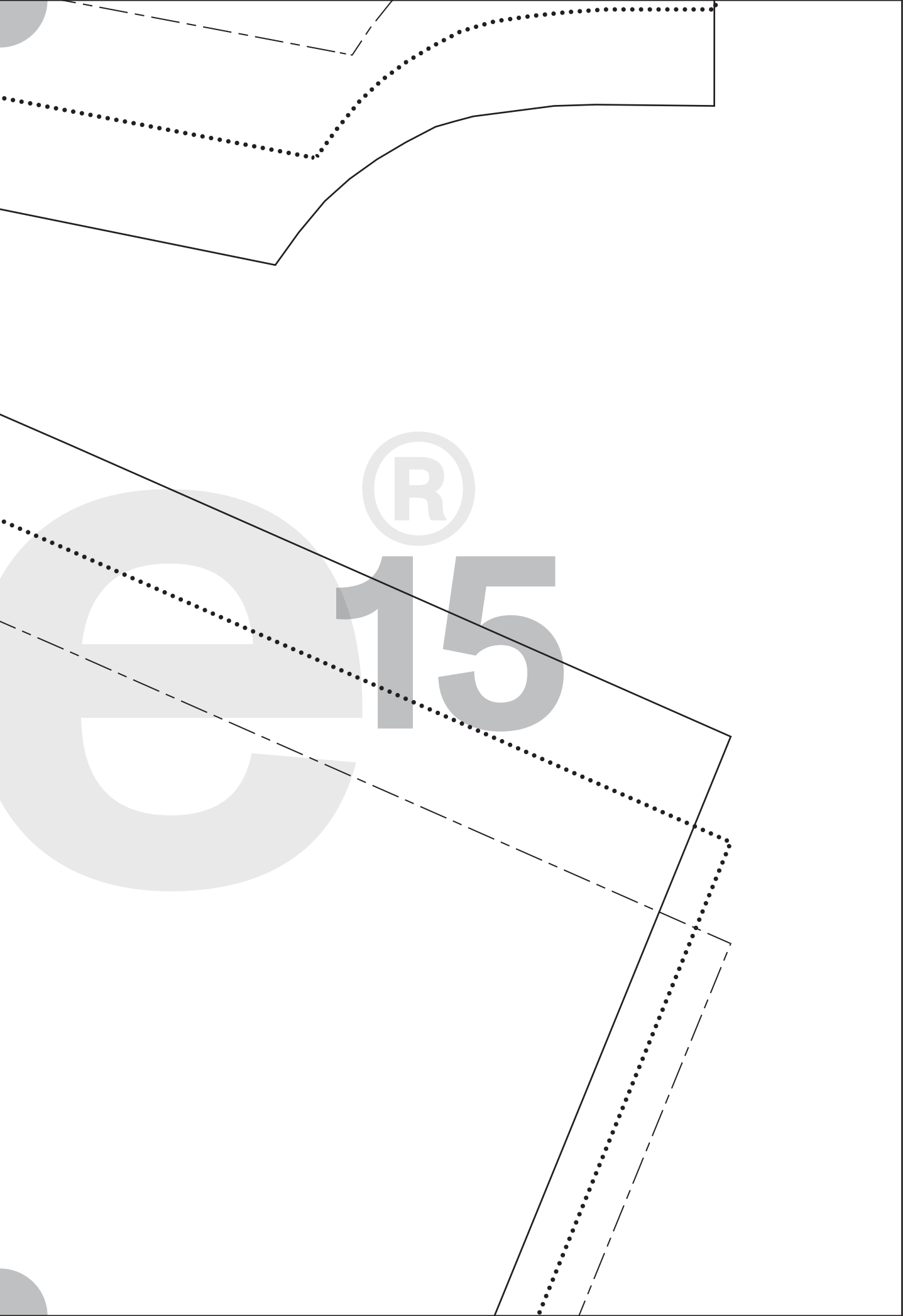


Free download from

13

n Selfmade.com

a14d

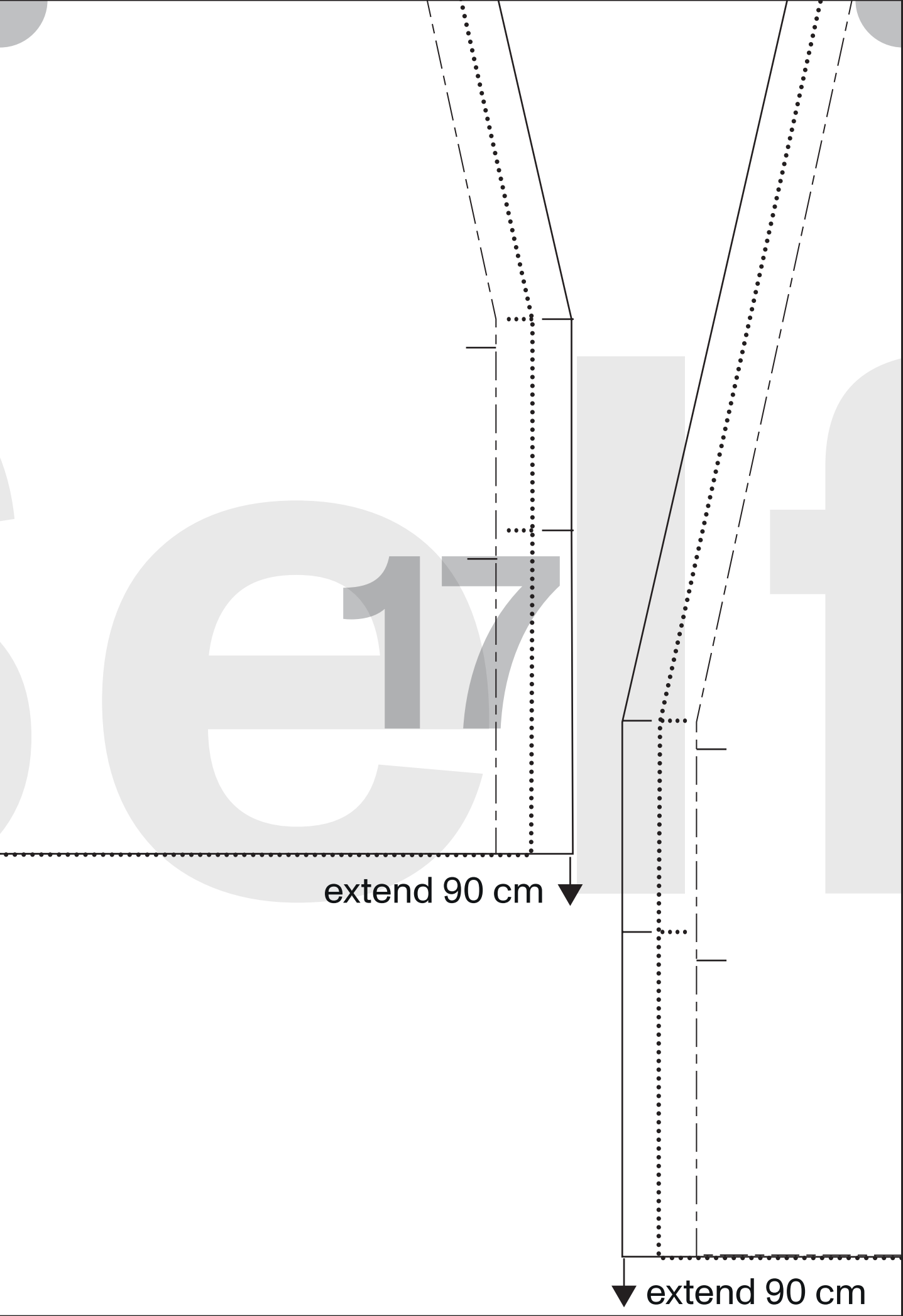


®

e15

16S

▼ extend 90 cm



extend 90 cm

extend 90 cm

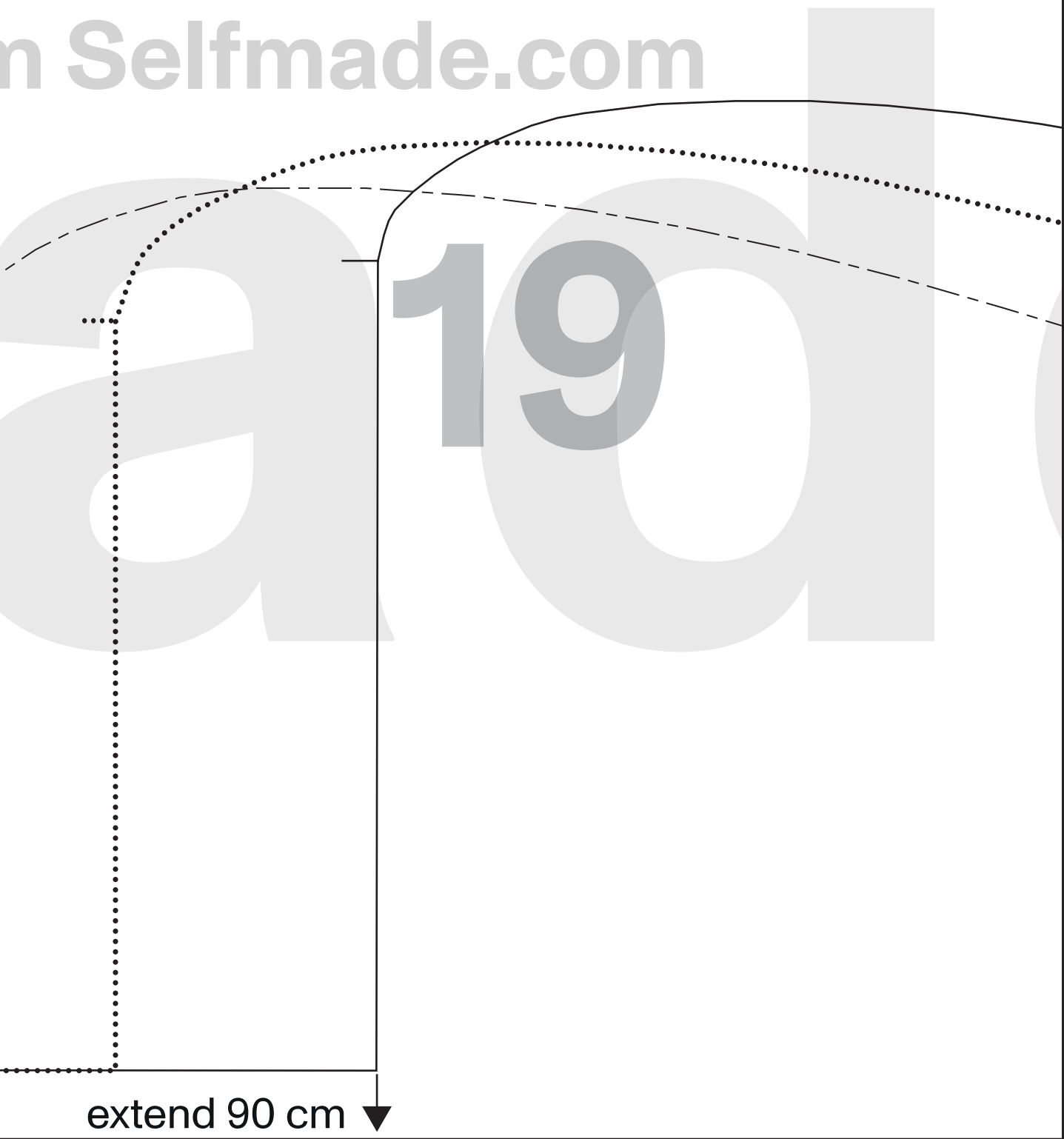
DIY2412
PART 2
SIDE FRONT



INCL. SEAM ALLOWANCE



n Selfmade.com



extend 90 cm ▼

